



MANDATORY RECALL

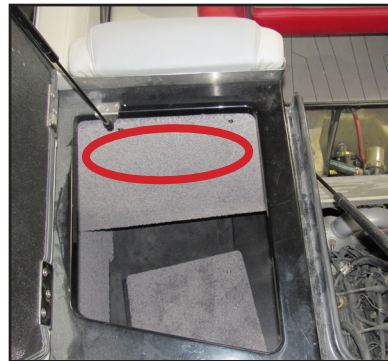
MONITORED BY THE U.S. COAST GUARD

SUMMARY:

Malibu Boats, LLC is issuing a recall on all model year 2016 Malibu and Axis boats **(Excluding Malibu TXi Response)** manufactured between **July 1, 2015 and June 30, 2016**. It has been identified that certain models, for a period of time, may have improper mounting of the circuit breaker that controls current to the Surf Gate and Power Wedge relay pack. The Breaker may be zip tied in the wiring harness rather than mounted with hardware in a secure location (See **Figures 1, 2, & 3**) potentially becoming loose during or after use in rough water. If this occurs the electrical system may be compromised causing the circuit breaker to become inoperable or create a short to ground situation, which could cause an electrical failure of the surf system or possibly melted components. While we believe there to be a limited number of units affected, we are initiating this recall for verification of all units **(Excluding Malibu TXi Response)**.

VERIFICATION:

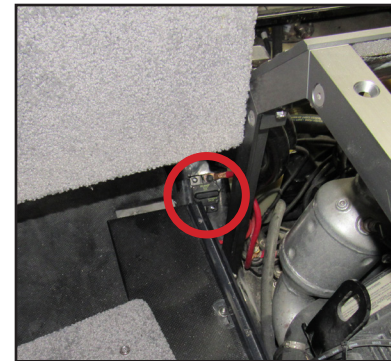
Verify that the circuit breaker is mounted properly & securely with **screws**. In most cases it can be located on the leanback panel of the port side rear seat (See **Figure 1**). Some models had the circuit breaker mounted on the inside seat base of the starboard rear seat (See **Figure 2**). If the circuit breaker cannot be found in one of these two locations, corrective action is required to locate the breaker and mount it (with screws) in a location approved by Malibu Boats, LLC. (See **Figures 1, 2, & 3**).



(Figure 1)



(Figure 2)



(Figure 3)

Topic:

- Circuit Breaker Mounting Location

Models Affected:

- **ALL** Malibu and Axis boats
Excluding TXi Response

Years Affected:

- MY2016 **ONLY**

Flat Rate Time:

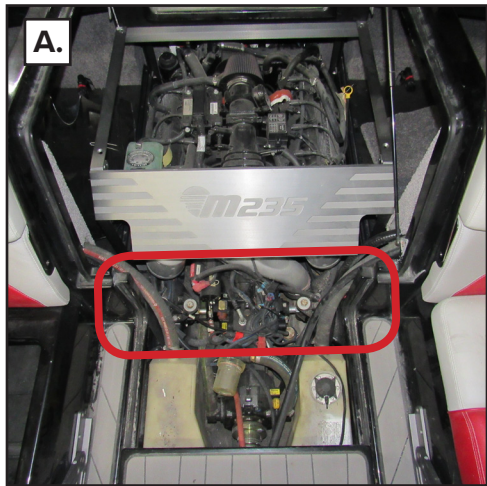
- **Inspection:** 0.1 hrs.
- **Repair:** 0.5 hrs.

5075 Kimberly Way
Loudon TN 37774
865.458.5478

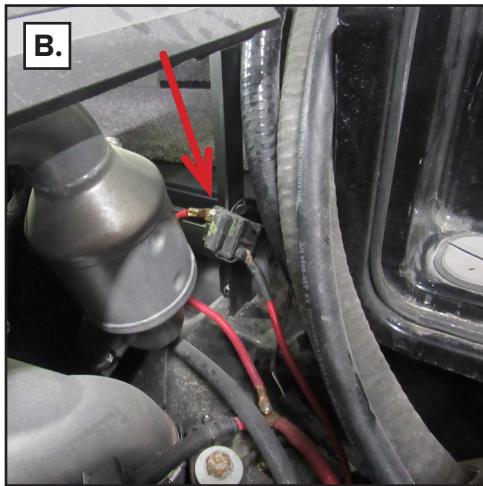
VERIFICATION CONT'D:

If the circuit breaker cannot be found or needs to be moved to an approved location, proceed with the following guidelines.

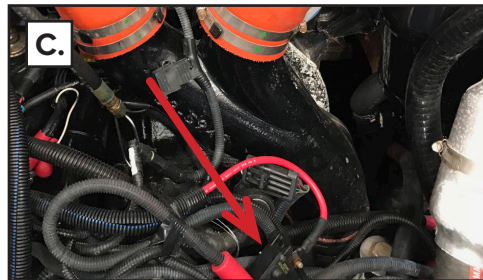
NOTE: The photos in this guideline were taken from a Malibu M235. Though other boat models may differ in appearance, the same general method should be used when relocating and mounting the breaker.



- A.** Remove the engine compartment covers and locate the circuit breaker. It should reside in the general location outlined in red.



- B.** Example of improperly mounted circuit breaker (front port side of engine compartment).



- C.** Example of improperly mounted circuit breaker (front of engine compartment above V-drive).

CORRECTIVE ACTION:

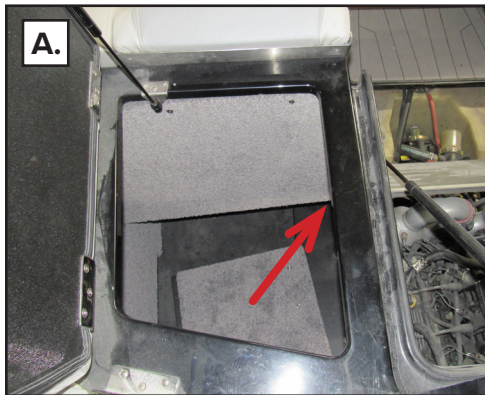
Once the circuit breaker is located, the technician may choose 1 of the 3 locations shown on the first page of this document and determine the best place to mount it depending on length of wire available and boat model.

NOTE: The example below shows how the breaker can be mounted to the stringer behind the port side rear seat (front port side engine compartment).

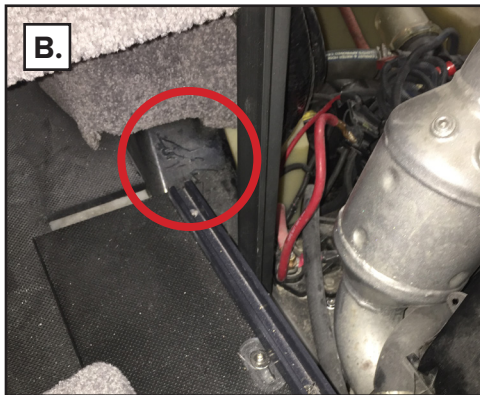
Required hardware:



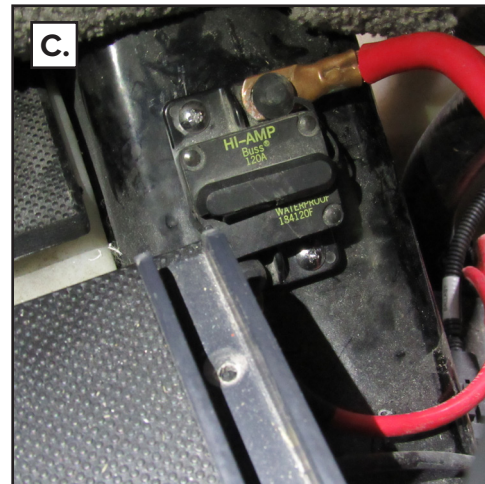
2pc. - #10 x 1" Stainless Steel, large panhead screws



A. The stringer can be accessed from the rear port side storage compartment.



B. This is the preferred mounting location if the length of wire is too short to mount the breaker to the leanback panel.



C. Example of properly mounted circuit breaker.